

University of Colorado Law School

## Colorado Law Scholarly Commons

---

Shifting Baselines and New Meridians: Water, Resources, Landscapes, and the Transformation of the American West (Summer Conference, June 4-6)

---

2008

6-5-2008

### SLIDES: Linking Growth, Land Use and Water

Jim Holway

Follow this and additional works at: <https://scholar.law.colorado.edu/water-resources-and-transformation-of-American-West>



Part of the Administrative Law Commons, Animal Law Commons, Aquaculture and Fisheries Commons, Biodiversity Commons, Climate Commons, Energy and Utilities Law Commons, Energy Policy Commons, Environmental Health and Protection Commons, Environmental Law Commons, Environmental Policy Commons, Land Use Law Commons, Law and Politics Commons, Law and Society Commons, Legal Ethics and Professional Responsibility Commons, Natural Resources and Conservation Commons, Natural Resources Law Commons, Natural Resources Management and Policy Commons, Oil, Gas, and Energy Commons, State and Local Government Law Commons, Sustainability Commons, Urban Studies and Planning Commons, Water Law Commons, and the Water Resource Management Commons

---

#### Citation Information

Holway, Jim, "SLIDES: Linking Growth, Land Use and Water" (2008). *Shifting Baselines and New Meridians: Water, Resources, Landscapes, and the Transformation of the American West (Summer Conference, June 4-6)*.

<https://scholar.law.colorado.edu/water-resources-and-transformation-of-American-West/6>

Reproduced with permission of the Getches-Wilkinson Center for Natural Resources, Energy, and the Environment (formerly the Natural Resources Law Center) at the University of Colorado Law School.

## **Session 6: The Urbanizing West: Limits to Water, Limits to Growth**

### **“Linking Growth, Land Use and Water”**

Jim Holway  
Director of Sustainability Partnership & Professor of Practice  
Arizona State University

Historically, throughout the United States, there has been a disconnect between water supply considerations and urban land use planning. Reasons for this disconnect range from the relative roles of federal, state and local government; to the character of growth; to the differing nature of land use and water resources planning. Water is typically regulated at the state and federal level with water quantity in particular regulated by the western states.

By contrast, the owners of water delivery and treatment infrastructure are typically not the states but are local governments or private water companies and irrigation districts. In addition, although land use significantly impacts water management, regulation of land use and growth is generally the exclusive domain of local government and actual land development investments are made by private property owners.

Arizona innovations to ensure sustainable water supplies sufficient for continued urban growth include: adoption of conservation programs and investments in utilization of renewable supplies by cities; within Active Management Areas (AMA's), the conservation and assured water supply requirements of the 1980 Groundwater Management Act; groundwater recharge and recovery programs including a groundwater replenishment district and the Arizona Water Banking Authority; water rights settlements with Native American communities; requirements for inclusion of a water resources element in comprehensive or general plans by larger or fast growing local governments throughout the state; 2005 legislative changes requiring water supply, drought and conservation planning by water

providers throughout the state; and finally 2007 legislative changes that allow cities and towns, as well as counties if they have a unanimous vote of their county supervisors, outside of AMA's to adopt an ordinance requiring new subdivisions to have a 100 year adequate water supply.

Arizona has been in a unique position relative to the linkages between water and growth. Within the AMA's, new development is subject to rigorous assured water supply rules. These rules require securing a 100 year supply of renewable or imported water as well as demonstrating adequate water quality and financial capability before any land can be subdivided. In the non-AMA, primarily rural areas, however, Arizona has had one of the weakest programs in the country. In these areas, weak state rules have generally been considered to prevent local governments from making stronger regulatory linkages between growth and adequate supplies. Though it is too soon to evaluate the impact of the recent legislation granting water adequacy authority to local governments throughout the state, or the 2005 water supply planning requirements, these will, at a minimum, raise awareness of water resources issues and likely increase the call to improve available information. This presentation will also briefly identify water supply adequacy approaches of other southwestern states.

# **THE URBANIZING WEST: LIMITS TO WATER, LIMITS TO GROWTH**

## **Natural Resources Law Center Annual Conference**

**June 5, 2008**

**JIM HOLWAY**

**GLOBAL INSTITUTE OF SUSTAINABILITY  
CIVIL & ENVIRONMENTAL ENGINEERING  
ARIZONA WATER INSTITUTE**



# WATER & LAND USE THE MISSING LINK

---



## WHY HISTORICALLY A DISCONNECT

**Water Use** – regulated at state & federal levels

- Reacting to crisis, facilitating econ development
- Water & Land – separate commodities, separate property rights

# WATER & LAND USE THE MISSING LINK

## WHY HISTORICALLY A DISCONNECT

- Land Use – regulated by local government
  - Avoid nuisance, grow & increase tax base
- Water historically not examined in comp. plans
  - Planners & water managers don't interact
- Comprehensive plans typically not followed
  - Too general, different elements conflict
  - Investment decisions – incremental & disconnected
- State & Local interests may be inconsistent

# WATER & LAND USE THE MISSING LINK

## WHY HISTORICALLY A DISCONNECT

- Significant growth on urban fringe and rural areas
  - with little or no planning capacity
- The regional and local water related impacts of development do not line up
  - Local areas receive benefit of development, but may not bear impact on water resources
- Inadequate willingness/ability to invest in water resources planning or management – at state & local level
- Assumption water will move uphill towards development
  - Just buy the rights and build infrastructure
- Leave it to the experts – water is complicated

...trust us!

# Arizona's Management Framework..

*Re-distributive*

*Regulatory*

*Constituent*

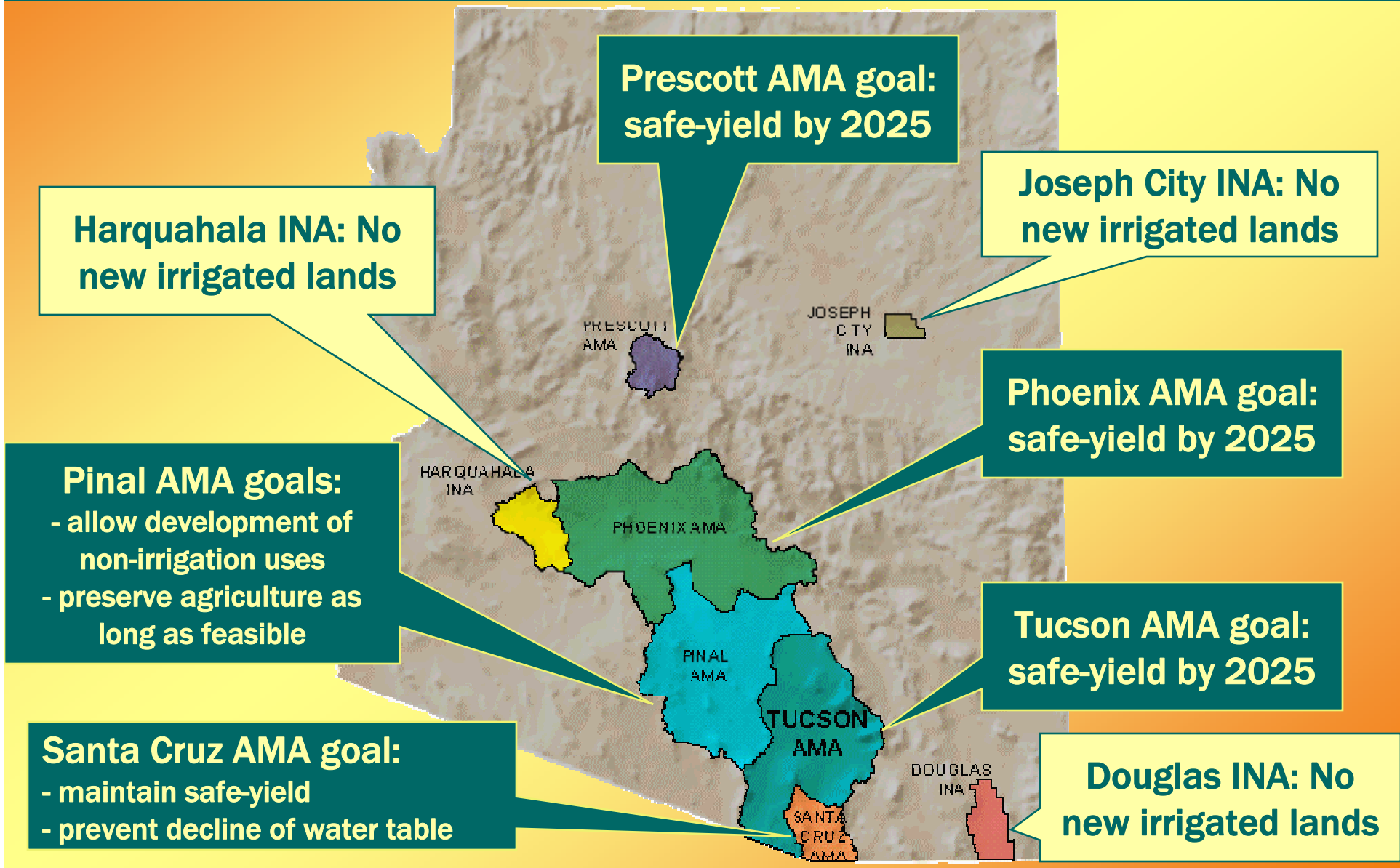
*Distributive*

- Strong Regulatory Approach
- Focus on Management Areas vs Statewide
- Choose State vs Regional/Local Control
- Maintained Groundwater / Surface Water Dichotomy
- Adopted Rights System with Grandfathering

..... & Consequences



# Water Management Areas



# ARIZONA'S WATER MANAGEMENT TOOLS

---

## Active Management Areas

- **Withdrawal Authorities**
- **Demand Management: Conservation Requirements & Use Restrictions**
- **Supply Management: Conversion to Renewable Water Supplies**

# SUPPLY MANAGEMENT

---



## ASSURED WATER SUPPLY CRITERIA

- Physical, Legal, & Continuous availability for 100 Years
- Adequate Quality
- Financial Capability
- Consistent with Conservation Targets
- Consistent with AMA Goals
  - Safe-yield in Phoenix, Tucson, Prescott AMAs

# ASSURED WATER SUPPLY

---

## Methods of Meeting Goal Requirement

- Use of renewable supplies (either directly or via underground storage and recovery):
  - Surface water
  - Effluent
- Membership in the Central Arizona Groundwater Replenishment District
- Groundwater imported from certain basins
- Dry lot subdivisions of less than 20 lots are exempt

# Two means of establishing an Assured Water Supply:

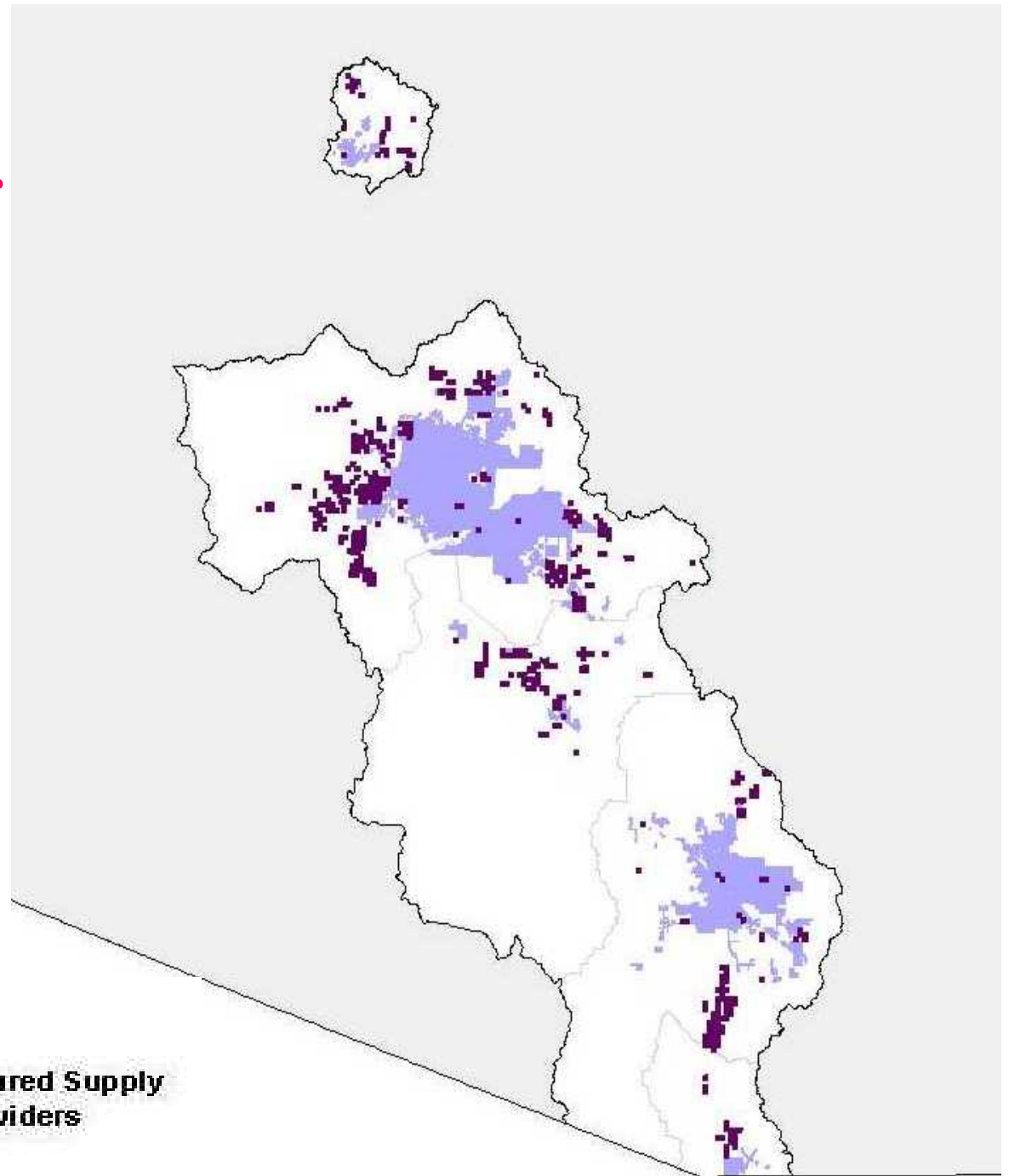
---

**Certificate of Assured Water Supply**  
(individual subdivision)

**Designation of Assured Water Supply**  
(blanket for water provider)

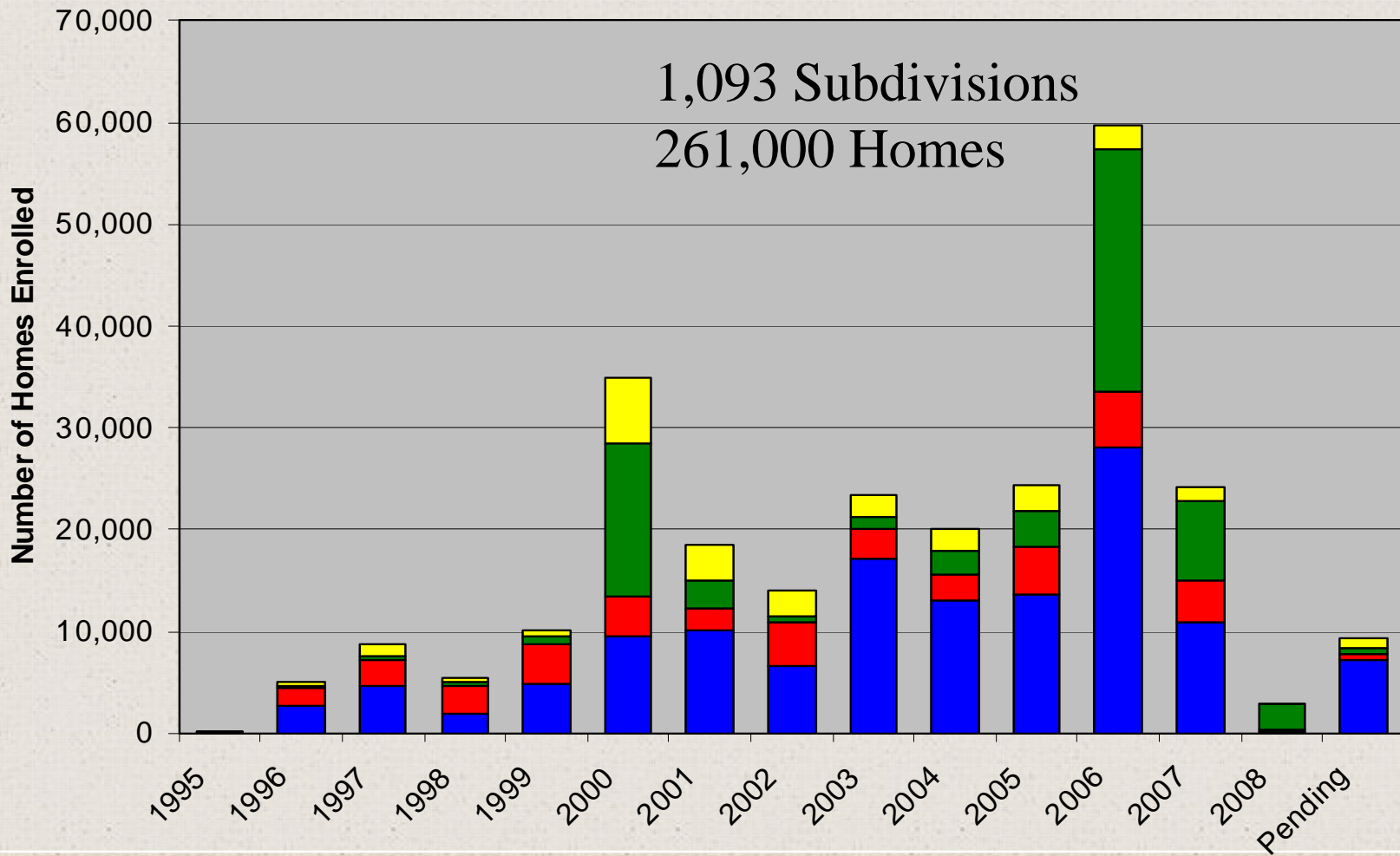
# Certificates of Assured Water Supply Issued

- Arizona
- Non-AMA Area
- Sections Issued Certificates of Assured Supply
- Designation of Assured Supply Providers
- Active Management Areas



# MEMBER LAND ENROLLMENT

As of February 28, 2008



■ West Phx AMA

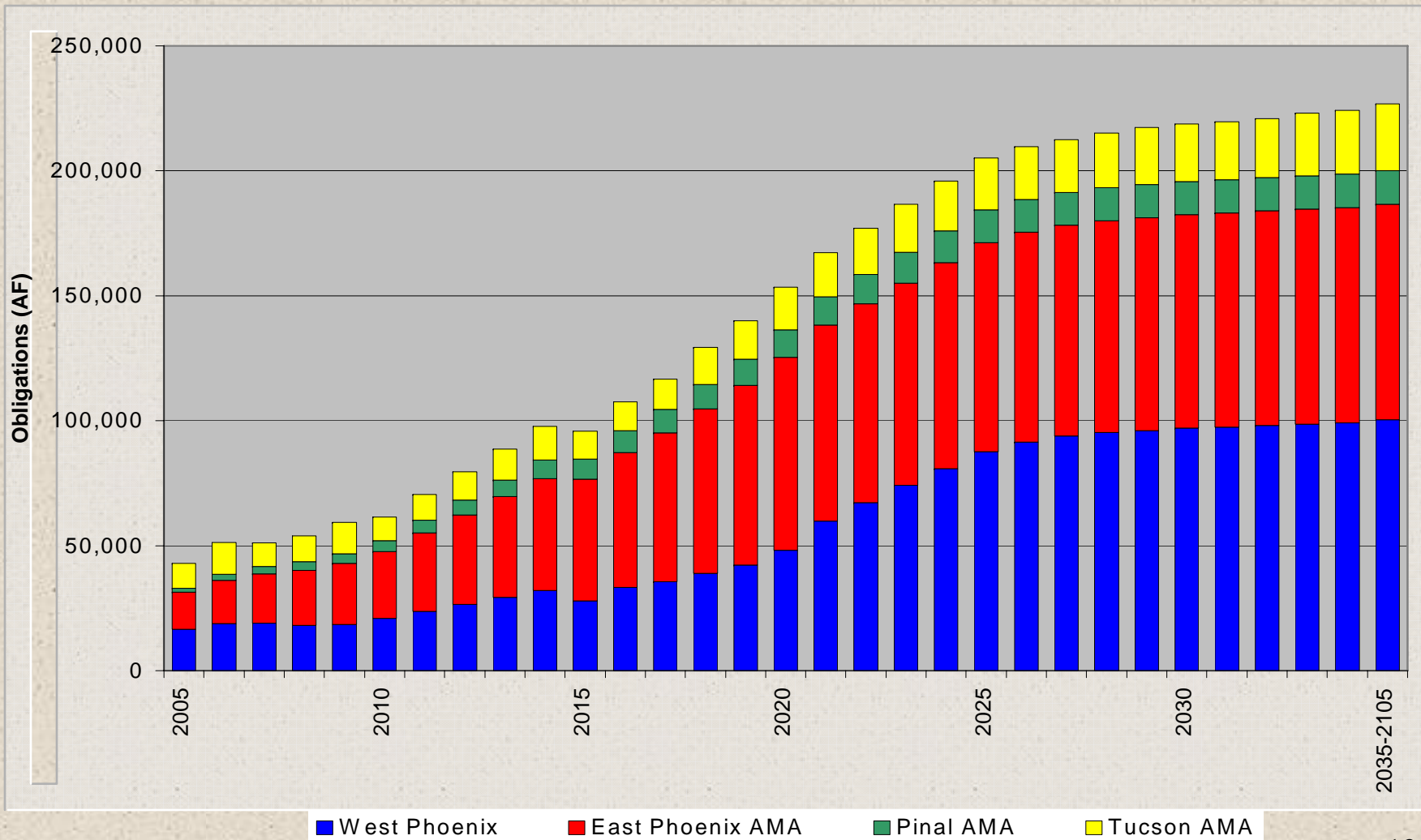
■ East Phx AMA

■ Pinal AMA

■ Tucson AMA



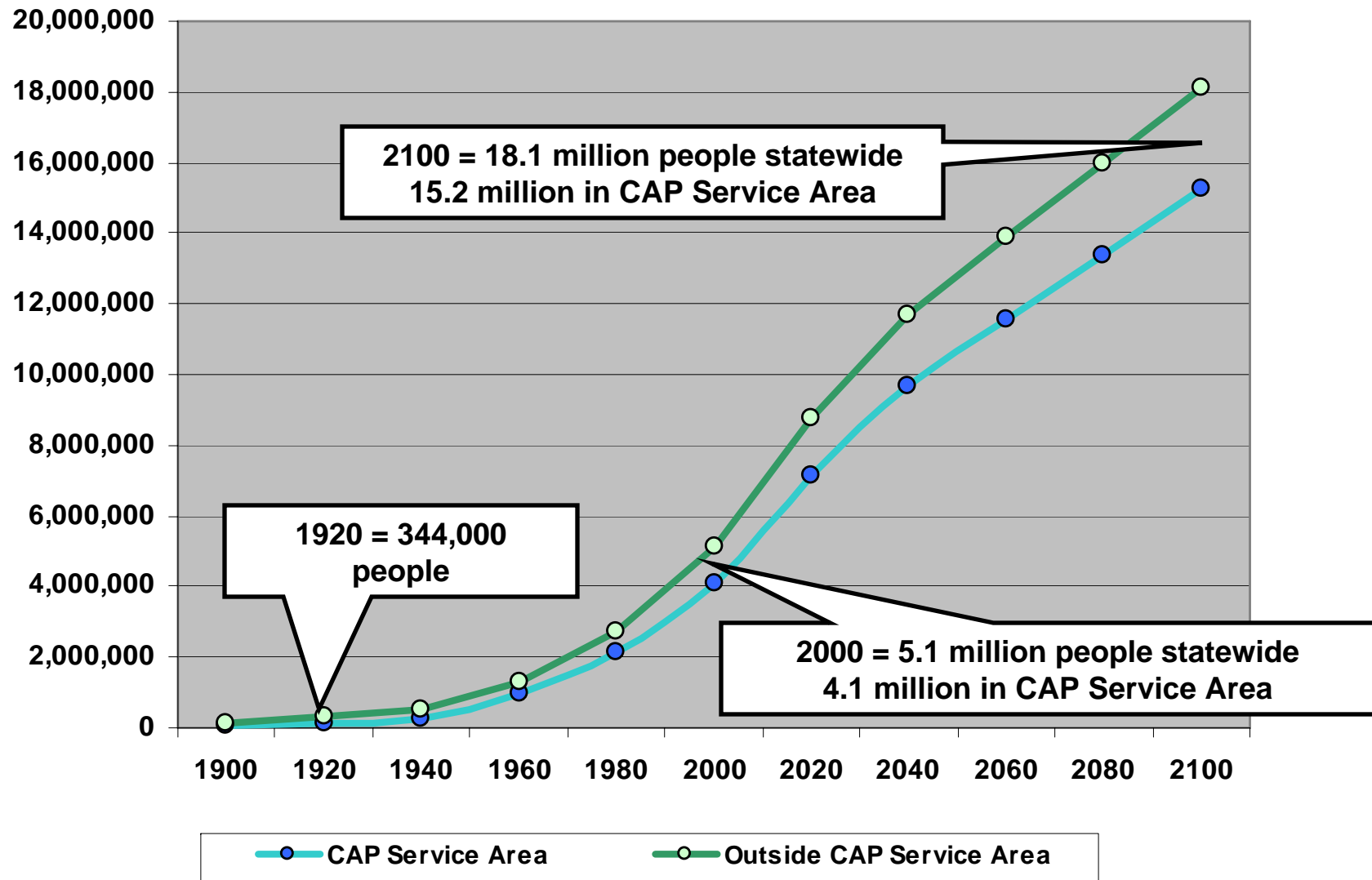
# PROJECTED OBLIGATIONS



Slide from: Cliff Neal, CAGR D



# Population Estimates and Projections 1900 to 2100



SOURCE: U.S. Census Bureau 1900 to 2000; Arizona Department of Economic Security 2010 to 2050 (April 2006 Projections); Global Institute of Sustainability 2060 to 2100 (June 2006)

# AZ Water Management Policy

---



## Program Design Considerations

- What are Water Mgmt Goals & Objectives
- What Actions Do We Want To Affect
  - Location & type of development, Uses, Supplies
- How Can Those Actions Be Influenced
  - Investments, Behaviors & Actions
- What Tools Do We Have Available

# AZ Supply Management Programs

<i>Re-distributive</i>	<i>Regulatory</i>
<i>Constituent</i>	<i>Distributive</i>

- Secure Supplies for New Development
- Who is the Decision-Maker?
- Developers, Landowners, Local Govt.
- Water Providers Make Investments
- Need for State Control
- Required Mechanism to Meet Rules - GRD

# WATER & LAND USE

## What Role For General Plans

---



### Water Resources Element

- Growing Smarter/Plus requires a water resources element from municipalities over 2,500 unless under 10,000 and with a growth rate of less than 2%, and counties with pops greater than 125,000
- 4 counties and 23 communities outside of AMAs qualify
- Over 50,000 pop, due at end of 2002 (2); under 50,000, end of 2003 (21)

# WATER & LAND USE

## What Role For General Plans

---



### Water Resources Element Requirements

- Identify known legally and physically available supplies
- Identify demand resulting from growth projected in general plan
- Identify how demand will be served by currently available supplies or a plan to obtain additional necessary water supplies - (all from existing data):

### Conclusions:

- Outside of AMAs, water elements have limited impact

# AZ Water Provider Plans



## HB 2277 - 2005 Legislative Session

- Water Supply Plan - sources, service area, historic & projected demands. Due 1/07 year later for small
- Drought Preparedness Plan - response actions & public information
- Water Conservation Plan - measures to reduce loss, increase efficiency, consider rate structure
- Report Water Use - starting May 2007 for 2006

# Water Adequacy - Strengthening AZ's Statewide Program

---



## HB 2693 / SB 1575 - 2007 Legislation

- Outside AMA County Supervisors may, by unanimous vote, adopt an ordinance prohibiting final plat approval if adequacy not demonstrated to ADWR, city must follow
- Potential exemptions to:
  - County may allow water hauling - indication on deed
  - ADWR Director may allow 20 years for water supply development
  - ADWR director can exempt if significant capital investment
- City can adopt own ordinance if County does not
- Water Providers in jurisdiction eligible for water supply development fund if jurisdictions adopt ordinance

# Adequate Water Supply Approaches



## Hierarchy of Approaches

- Do Nothing - Buyer Beware
- Buyer Informed - Subsequent Buyers?
- Public Notice - Comment/Protest Right?
- Require Demonstration of \_\_\_\_\_ Year Supply
- Require Renewable Supply & Replacement of Mined Groundwater (Safe-Yield?)
- Local Area Sustainability for \_\_\_\_\_ Years
- Recovery from Previous Aquifer Depletion<sup>21</sup>



# Adequate Water Supply Approaches

---



## California

- **SB 221 (2001) - Effective 1/2002**
  - Apply to subdivision > 500 units
  - Developer must demonstrate 20 yr supply
  - Must consider normal & dry years
  - Water provider must verify adequacy
- **SB 610 (2001) - Proj. subject to CEQA**
  - Requires water supply assessment

# Adequate Water Supply Approaches

---

## Nevada

- State Engineer reviews all subdivisions. Approval guarantees adequate water
- Utilities must secure permanent water rights to provide continuous & adequate supplies.
- Utility plans reviewed by Nevada Public Utilities Commission or by So NV Water Authority for Las Vegas area
- Cities & Counties have no explicit authority to adopt stricter standards

# Adequate Water Supply Approaches

---



## Colorado

- Counties Required to Establish Adequacy Requirements for Subdivisions
- State Engineer reviews for consistency
  - opinion is advisory only
  - El Paso County - requires 300 year supply
  - Denver Basin allocated based on 100 years
- State Engineer also review for “material injury”

# Adequate Water Supply Approaches

---

## Colorado - 2008 Legislation (HB 1141)

- **Local Govt. shall not approve development unless applicant demonstrates adequate supply**
  - Applies to development over 50 lots
  - Local govt has sole discretion to determine adequacy
  - Local govt can require for smaller developments
  - Includes consideration of hydrologic variability & conservation

# Adequate Water Supply Approaches

---



## New Mexico

- (1995 & 2002 Statutes)
  - Counties required to establish adequacy standards for subdivisions in unincorporated areas
  - Most cities may adopted their own standards
  - Albuquerque efforts undermined by County

# Adequate Water Supply Approaches

---



## Texas

- **SB 1323 (1999)**
  - TNRCC guidance on certifying sufficient water for subdivision's maximum future demand
  - County & Municipality **MAY** require certificate
- **SB 1**
  - A new provider can not be started unless adjacent providers refuse service