

University of Colorado Law School

Colorado Law Scholarly Commons

Community-Owned Forests: Possibilities,
Experiences, and Lessons Learned (June 16-19)

2005

6-19-2005

SLIDES: Forest Grove Municipal Watershed: Using Citizen Involvement to Break Gridlock

Scott Ferguson

Follow this and additional works at: <https://scholar.law.colorado.edu/community-owned-forests>



Part of the [Business Organizations Law Commons](#), [Forest Management Commons](#), [Land Use Law Commons](#), [Natural Resource Economics Commons](#), [Natural Resources and Conservation Commons](#), [Natural Resources Law Commons](#), [Natural Resources Management and Policy Commons](#), [Property Law and Real Estate Commons](#), [Public Administration Commons](#), [Public Policy Commons](#), [Recreation, Parks and Tourism Administration Commons](#), [State and Local Government Law Commons](#), and the [Urban Studies and Planning Commons](#)

Citation Information

Ferguson, Scott, "SLIDES: Forest Grove Municipal Watershed: Using Citizen Involvement to Break Gridlock" (2005). *Community-Owned Forests: Possibilities, Experiences, and Lessons Learned (June 16-19)*. <https://scholar.law.colorado.edu/community-owned-forests/14>

Reproduced with permission of the Getches-Wilkinson Center for Natural Resources, Energy, and the Environment (formerly the Natural Resources Law Center) at the University of Colorado Law School.

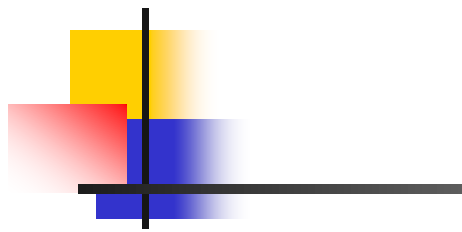
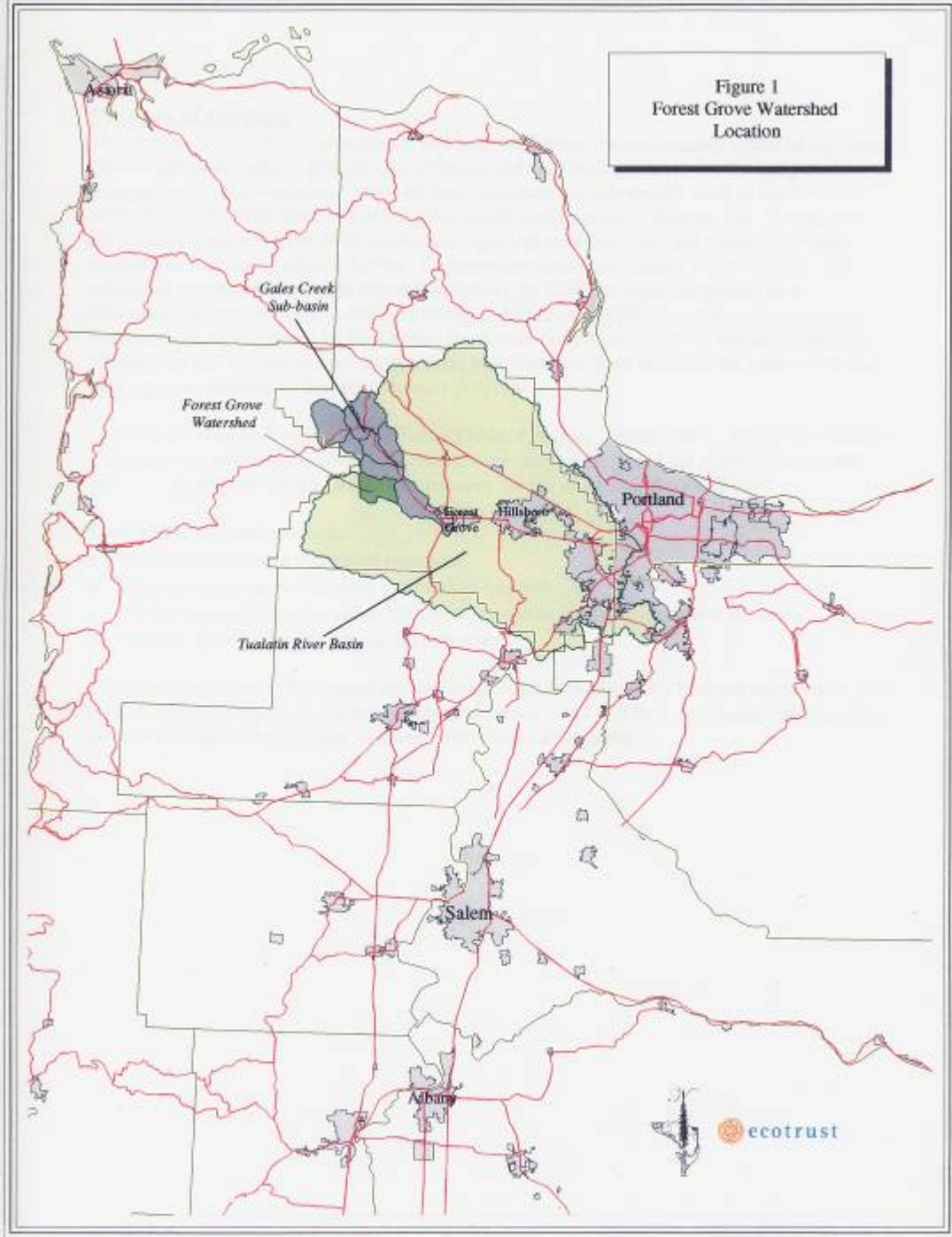
Forest Grove Municipal Watershed



Using Citizen Involvement
To Break Gridlock

ITS Management - 2001

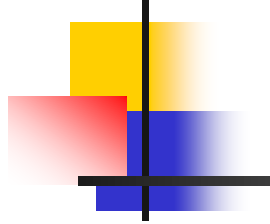
Figure 1
Forest Grove Watershed
Location





Forest Grove Water System

- 1st diversion in 1908
- Land acquired 1917-1945
- 4,345 forested acres
- 2-4 mg/d monthly withdrawal
- Supplies 50% of city water needs
- Low cost, higher quality water





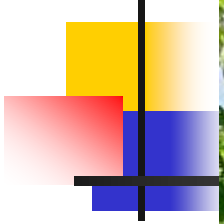
Forest Grove Watershed

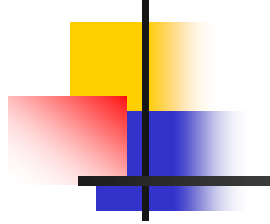
- Douglas-fir dominated, older forest
- Largest block in Oregon Coast Range
- 8 miles of streams
- Steelhead and Coho salmon habitat
- 4 water diversions



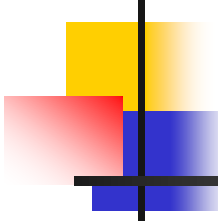
Management History

- 1960-1977 State
- 1977-1982 public works director
- 1983-1987 Consultant
- 1987 logging suspended
- 1994 attempt to restart program
- 1996 “Pineapple Express” 100-year storm
- 2000 CAC established
- 2001 ITS prepares management plan











Forest Management Issues

- Clearcutting
- Roadbuilding
- Landslides
- Sedimentation
- Herbicides
- Lost revenue
- Public access



A new context

- New city manager, public works manager
- Forest practice violations
- ESA considerations
- New citizen involvement approach



Planning Process

- Establish Citizens Advisory Committee



Citizens Advisory Committee

- Bob Van Dyk - PU professor
- John Minor - former city council member
- Lou Karabinus - consulting forester
- Steve Matiaco - woodlot owner
- Ray Guisiente - Chamber of Commerce chair
- Rosemary Trudeau - citizen activist
- Steve Johnson - manager for Merix Corp. (water user)
- Nancy Speiler - environmental activist, Water Resource Board member
- Victoria Lowe, activist, future city councilor

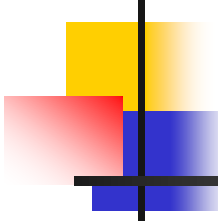
Strong Relationships





Planning Process

- Establish Citizens Advisory Committee
- Empower CAC





Planning Process

- Establish Citizens Advisory Committee
- Empower CAC
- **Hire Consultant**



Planning Process

- Establish Citizens Advisory Committee
- Empower CAC
- Hire consultant
- Consensus decision making
- Inform/Involve Public



Plan Elements

- Timber, F&W, rare plant inventories
- Timber de-emphasize
- Large Reserves
- Conservative harvest levels
- Biodiversity emphasis
- Long rotations - thinning emphasis
- No clearcutting



Recommendations

- Fix erosion problems
- Fish passage improvements
- Owl surveys
- Yearly Harvests
- Annual net income \$350,000



Public Acceptance

- Frequent press coverage of planning process
- No criticism at public meeting
- 2001 League of Oregon Cities award



Lessons learned

- Go slow
- Involve the public
- Let go of control
- Trust public wisdom